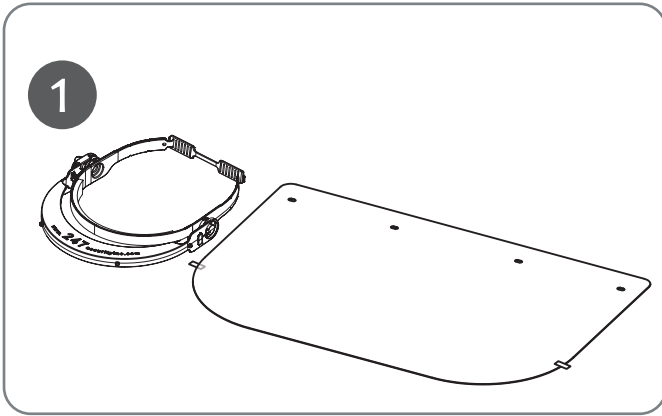
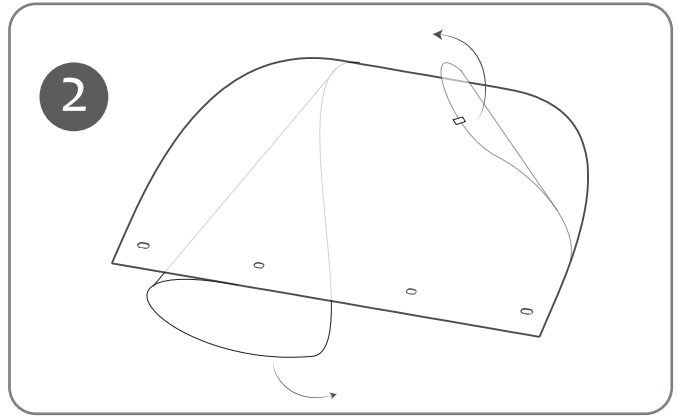


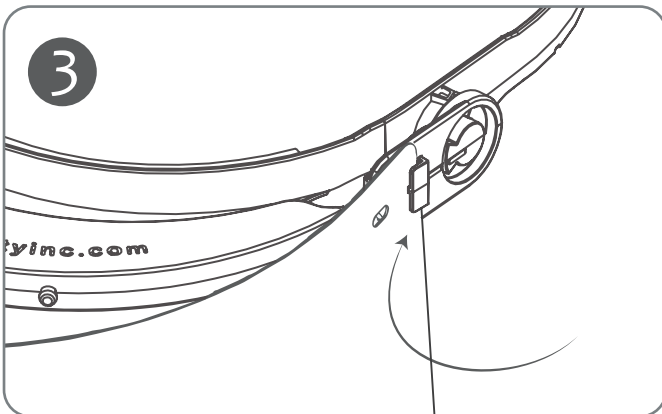
# Assembly Instructions:



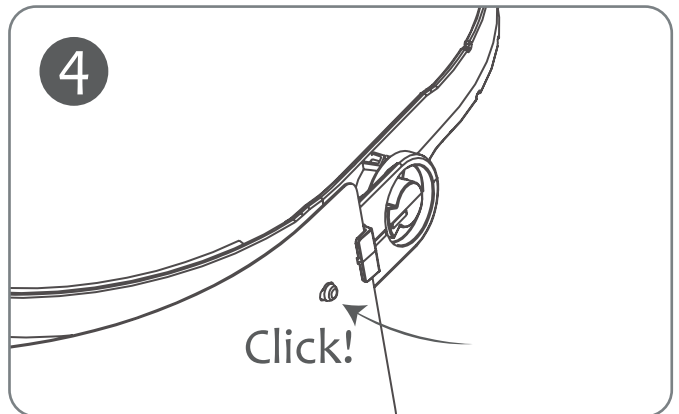
**Remove your shield and visor from the packaging to prep for assembly**



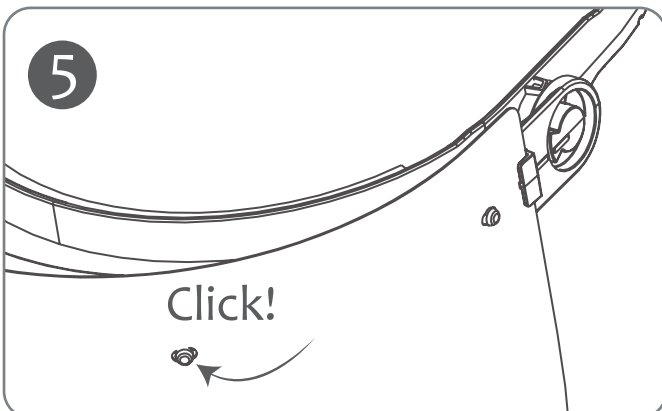
**Remove the protective foil from both sides of the visor**



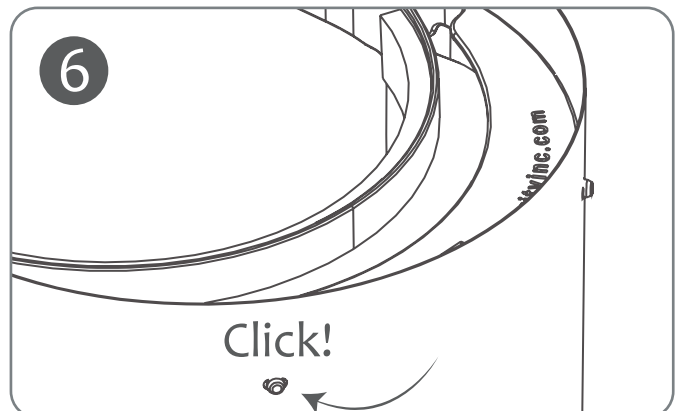
**Slide in visor to the open tab (the tab with no slider piece on it)**



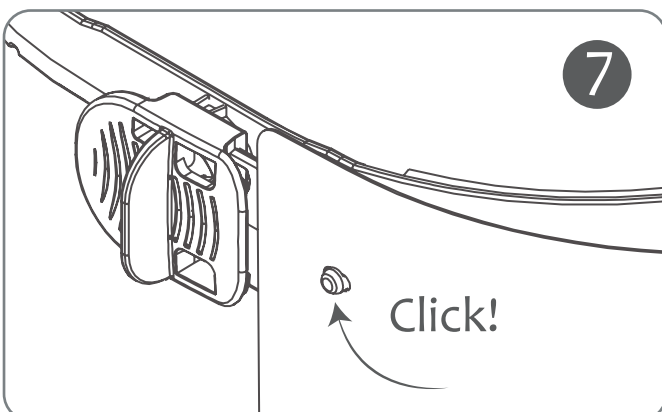
**Ensure the visor holes and frame mount points are lined up and press**



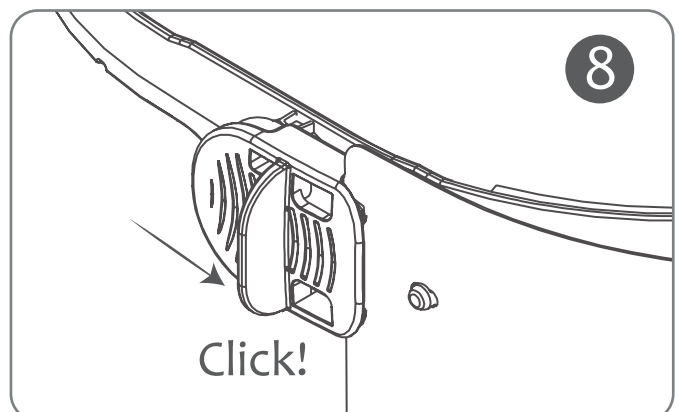
**Ensure that all visor holes “click” onto the frame mounting points**



**Continue to align and press visor onto frame mounting points**



**Continue to align and press visor onto final frame mounting point**



**Secure the visor by sliding the flip up tab into place until you hear a click**



For: Secure Shield | Gerry Shield  
by Toronto MicroElectronics Inc.

higerry.com  
1.888.811.0132